

# TECTITE 4.0 (WiFi) and TEC WiFi Link Quick Guide



**How to connect and use the  
TECTITE 4.0 (WiFi) software  
with the TEC WiFi Link and DG-  
700 Pressure and Flow Gauge.\***

\*Will work with the DG-500 gauge

*TECTITE 4.0 (WiFi) is available for download at [www.energyconservatory.com/software](http://www.energyconservatory.com/software)*

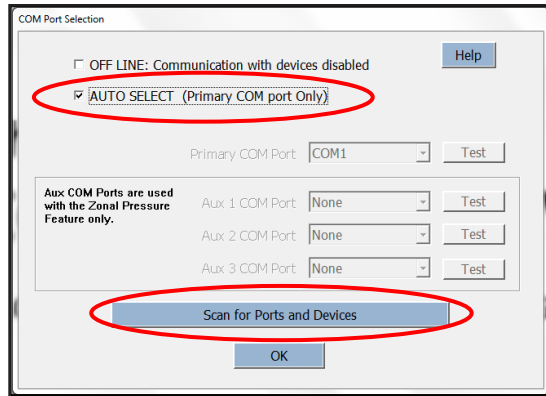
**Performance Testing Tools**

612.827.1117 | [www.energyconservatory.com](http://www.energyconservatory.com)

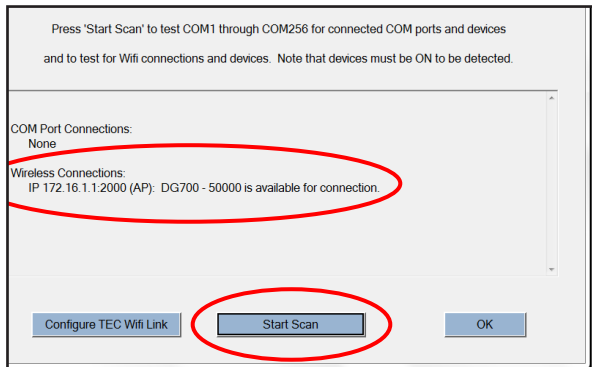
**TEC**  
The Energy Conservatory

# TECTITE 4.0 (WiFi) – WiFi Link Quick Guide

1. First connect your laptop to the TEC WiFi Link network (see **TEC WiFi Link Quick Guide**). Open the TECTITE program, go to the **Options... COM Port Selection** menu and choose **AUTO SELECT**. Now click on the **Scan for Ports and Devices**

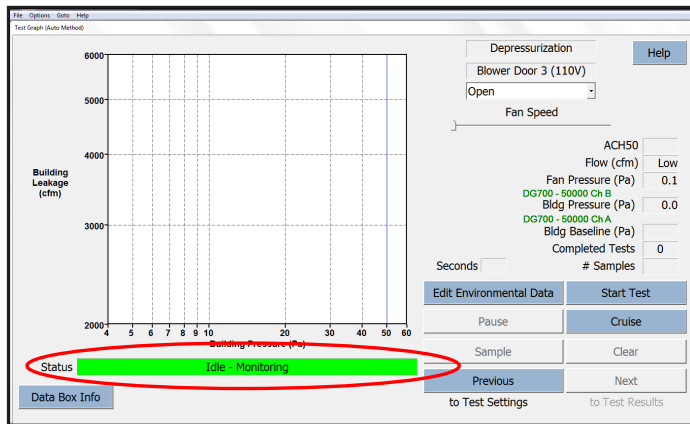


click on the **Scan for Ports and Devices** button and then **Start Scan** to initiate a scan of available communication ports and DG-700 gauges. The scan will include a search for a DG-700 gauge using the wireless network that the laptop is currently connected to. Once you have verified that TECTITE can connect with your DG-700 gauge through the wireless



network (e.g. the gauge shows up in the Wireless Connections list), close both the **Scan** and **COM Port Selection** windows by clicking the OK buttons and begin your TECTITE test using standard TECTITE procedures.

**Note:** Once the communication link has been established between TECTITE and the TEC WiFi Link, light **#3** on the TEC WiFi Link will turn on. The flashing yellow light **#4** indicates data transfer between TECTITE and the gauge. When you are viewing the Test Graph screen in TECTITE, the green status bar at the bottom of the screen (with the text **Idle – Monitoring**) verifies that the software and gauge are communicating and ready to use. The DG-700 display is dashed whenever TECTITE is in control of the gauge.

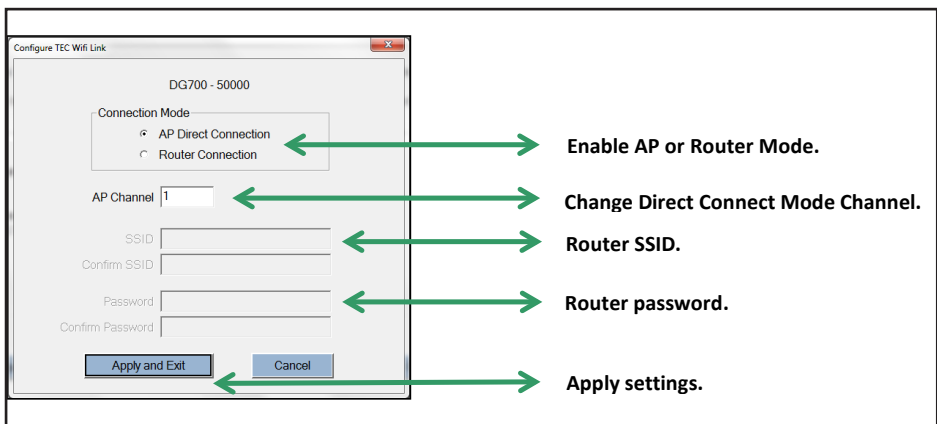


2. If TECTITE can't find a gauge to connect with, the green status bar will not appear at the bottom of the Test Graph screen, and the message "Primary Device Is Not Connected" will appear below the graph. Possible reasons for the green status bar not appearing include:
  - Your laptop is not connected to the TEC WiFi Link network (TEC WiFi Link configured to **AP Direct Connect Mode**).
  - The TEC WiFi Link or DG-700 are not powered on.
  - Your laptop is not connected to the specified Router (TEC WiFi Link configured to **Router Mode**).

- Your laptop is out of range of the TEC WiFi Link network, or Router.
- AUTO SELECT is not selected in the **Com Port Selection** screen.
- A firewall on your laptop is preventing TECTITE from accessing the TEC WiFi Link network.

## Configuration Options for the TEC WiFi Link

### TECTITE Configure Screen



### 1. How to Set-Up the TEC WiFi Link in Router Mode

- Connect your laptop to the TEC WiFi Link in **AP Direct Connect Mode**.
- Open the TECTITE program, go to the **Options...COM Port Selection** menu and click on the **Scan for Ports and Devices** button and then **Start Scan**. Once you have verified that TECTITE can connect with your DG-700 gauge through the wireless network (e.g. the gauge shows up in the Wireless

- Connections list), click on the **Configure TEC WiFi Link** button at the bottom of the scan window.
- In the Configure TEC WiFi Link window, enable **Router Mode** (click on the **Router Connection** button).
- Enter the Router SSID and Password (these must match the SSID and Password for the Router you will connect to).
- Press the **Apply and Exit** button.
- Close TECTITE.
- The TEC WiFi Link will now begin searching for the Router specified in the Configure screen. Light **#2** will blink until the TEC WiFi Link finds the Router and connects to it (then the light will turn on solid).
- You will need to connect your laptop to the Router network before running TECTITE again.

## 2. How to Re-Configure the TEC WiFi Link back to AP Direct Connect Mode from Router Mode

There are two methods to re-configure the TEC WiFi Link back to AP Direct Connect Mode.

### Method 1

- Power on the TEC WiFi Link and the DG-700 gauge.
- Press and hold button **A** on the TEC WiFi Link for 5 seconds. All 4 lights will begin flashing. When you release button **A**, the TEC WiFi Link will restart in **AP Direct Connect Mode** along with the default password/security key of **tecwifi12**
- This will also clear the **Router Mode** SSID and Password.

## Method 2

- Connect your laptop to the specified **Router** network.
- Open the TECTITE program, go to the **Options...COM Port Selection** menu and click on the **Scan for Ports and Devices** button and then **Start Scan**. Once you have verified that TECTITE can connect with your DG-700 gauge through the **Router** network (e.g. the gauge shows up in the Wireless Connections list), click on the **Configure TEC WiFi Link** button at the bottom of the scan window.
- In the Configure TEC WiFi Link window, enable **AP Direct Connect Mode** (click on the AP Direct Connection button).
- Press the **Apply and Exit** button. The TEC WiFi Link is now in **AP Direct Connect Mode**.
- Close TECTITE.
- You will need to connect your laptop to the TEC WiFi Link network before running TECTITE again.

## 3. How to Change the AP Direct Connect Mode Network Channel

There are two methods to change the network channel being used for **AP Direct Connect Mode**.

### Method 1

- Power on the TEC WiFi Link and the DG-700 gauge.
- Briefly press button **A** on the TEC WiFi Link. The current network channel will jump up by 5 channels within the allowed channel frequencies of 1 to 11 (e.g. channel 1 to channel 6, or channel 6 to channel 11, or channel 11 to channel 5, etc).

## Method 2

- Connect your laptop to the TEC WiFi Link in **AP Direct Connect Mode**.
- Open the TECTITE program, go to the **Options...COM Port Selection** menu and click on the **Scan for Ports and Devices** button and then **Start Scan**. Once you have verified that TECTITE can connect with your DG-700 gauge through the wireless network (e.g. the gauge shows up in the Wireless Connections list), click on the **Configure TEC WiFi Link** button at the bottom of the scan window.
- Enter a new Channel number in the **AP Channel** field (in the United States, Channel selection should be limited to Channels 1 through 11).
- Press the **Apply and Exit** button.
- Close TECTITE.
- The TEC WiFi Link will now use the updated network channel.

TECTITE 4.0 (WiFi) is available for download at  
[www.energyconservatory.com/software](http://www.energyconservatory.com/software)



**2801 21st Avenue South, Suite 160  
Minneapolis, Minnesota 55407  
phone: (612) 827-1117  
fax: (612) 827-1051  
e-mail: [info@energyconservatory.com](mailto:info@energyconservatory.com)  
website: [www.energyconservatory.com](http://www.energyconservatory.com)**

Visit [www.energyconservatory.com/support/manuals](http://www.energyconservatory.com/support/manuals)  
for the latest quick guide version

*Manual updated 6/24/13*

Duct Blaster®, FlowBlaster®, TrueFlow® are registered trademarks  
of The Energy Conservatory.  
Minneapolis Blower Door™ is a trademark of The Energy Conservatory

© 2013 The Energy Conservatory